

# DFW AIRPORT NORTH DISTRIBUTION CENTER

Lakeside Parkway, Flower Mound, Texas

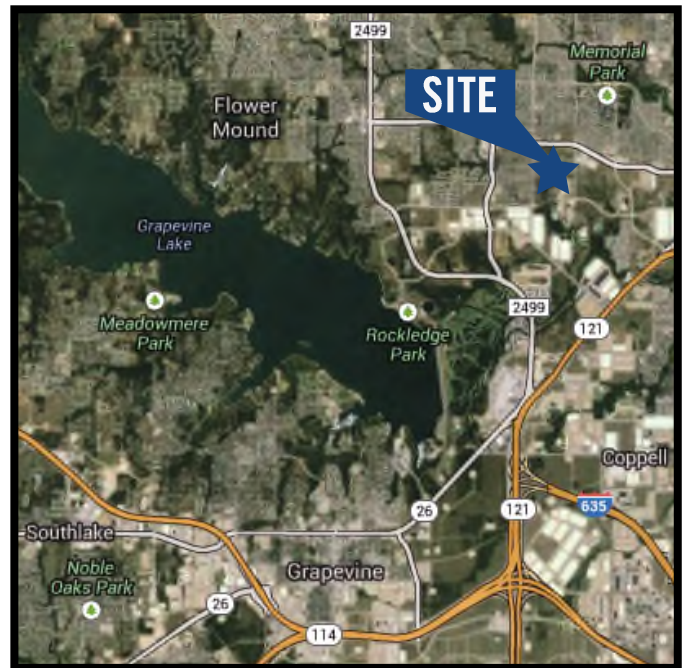
401,600 SF



## LOCATION MAP



## AERIAL VIEW



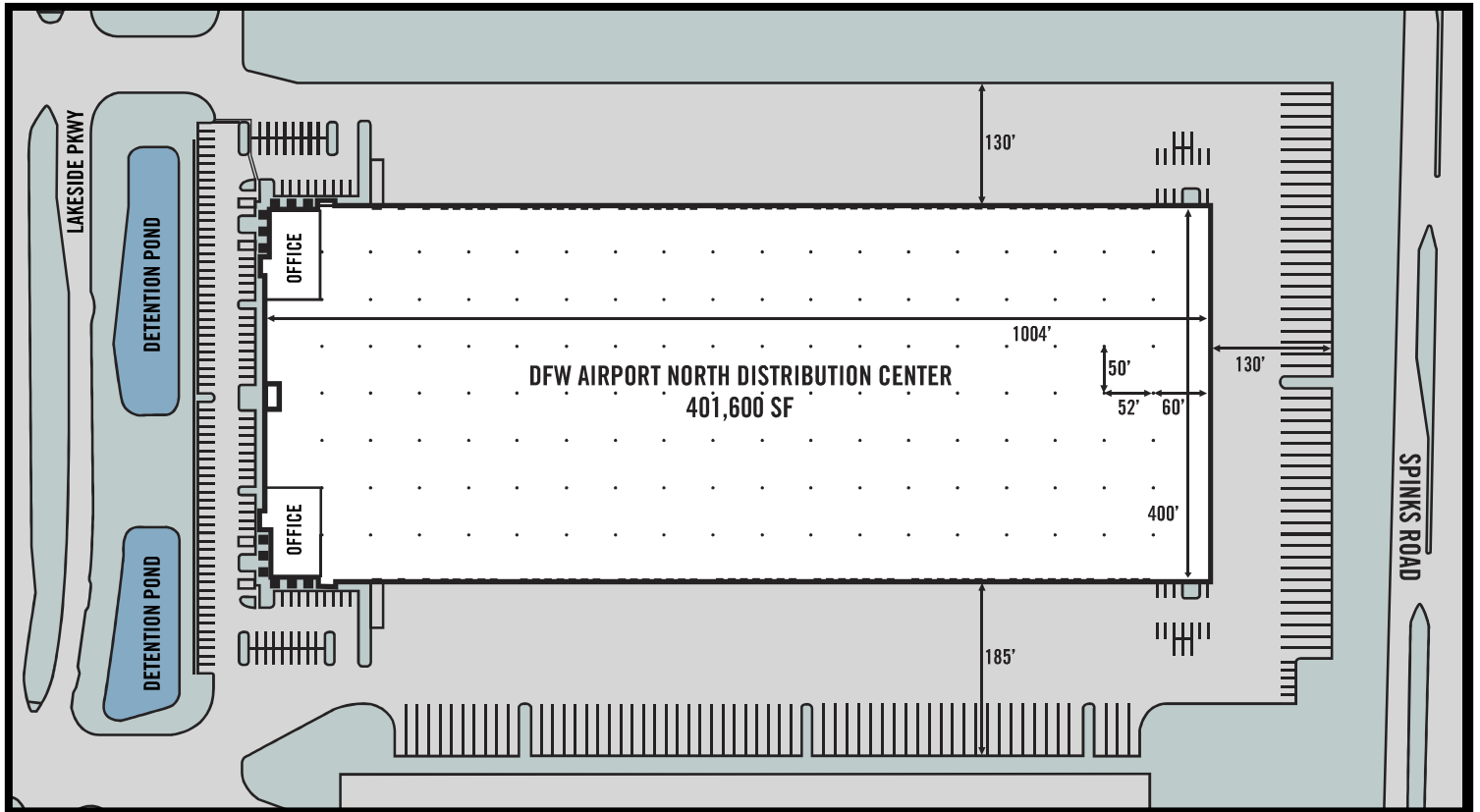
**FOR MORE INFORMATION PLEASE CONTACT:**  
**Huntington Industrial Partners**

Steve Meyer | Phone: 972-951-9016 | Email: [smeyer@huntingtonindustrial.com](mailto:smeyer@huntingtonindustrial.com)  
5950 Berkshire Lane, Suite 1250 | Dallas, Texas 75225

## DFW AIRPORT NORTH DISTRIBUTION CENTER

Lakeside Parkway, Flower Mound, Texas

### SITE PLAN | COMPLETION DATE AUGUST 2014



### BUILDING FEATURES

**Building Type:** Bulk

**Loading Configuration:** Cross Dock

**Building Size:** 401,600 SF

**Office Build-Out:** BTS

**Acres/Coverage %:** 23.5 Acres / 39.2% Coverage

**Clear Height:** 32'

**Building Depth:** 400'

**Parking:** 181 Auto Parking Spaces

**Loading:** 108 Dock High Doors / 2 Drive-in Ramps

**Truck Court Depths:** 130' and 185'

**Concrete Truck Courts:** 117 Trailer Stalls

**Fire Sprinklers:** ESFR

**Column Spacing:** 50' x 52' (Typical)

**Lighting:** T-5

**Other:** Two Miles from DFW Airport;  
Triple Freeport Designation

**FOR MORE INFORMATION PLEASE CONTACT:**

**Huntington Industrial Partners**

Steve Meyer | Phone: 972-951-9016 | Email: smeyer@huntingtonindustrial.com

5950 Berkshire Lane, Suite 1250 | Dallas, Texas 75225